



Multiple Application Platform Server

MAPS 6.6.2 Release Guide

Product version 6.6.2

Last updated 1/28/2021

Trademark, Publishing Statement, and Copyright Notice

© 1998-2021 Evisions, Inc. All rights reserved.

This software and related documentation are provided under a license agreement containing restrictions on use and disclosure and are protected by intellectual property laws. No part of this document may be reproduced, stored in or introduced into a retrieval system, or transmitted in any form or by any means (electronic, mechanical, photocopying, recording, or otherwise), or for any purpose, without the express written permission of Evisions, Inc.

The information contained herein is subject to change without notice and is not warranted to be error-free. Product features referenced herein for a period of time may not match product contents. Evisions, Inc. does not warrant that the functions contained in the software will meet your requirements or that the operation of the software will be uninterrupted or error free. Evisions, Inc. reserves the right to make changes and/or improvements in the software without notice at any time.

This software and documentation may provide access to or information on content, products, and services from third parties. Evisions, Inc. and its affiliates are not responsible for and expressly disclaim all warranties of any kind with respect to third-party content, products, and services. Evisions, Inc. and its affiliates will not be responsible for any loss, costs, or damages incurred due to your access to or use of third-party content, products, or services. Evisions, Inc. does not endorse the content or developer of any products or web sites mentioned.

All information in this guide is designed for instructional purposes only. Evisions, Inc. makes no guarantees regarding the accuracy or performance of any techniques used in this guide. Software configurations and environments may vary, and some techniques used in this guide may not operate efficiently under all configurations. This guide may contain examples of various technologies or products, which are the sole property and responsibility of their creators.

Trademarks are the property of the respective owners for any products mentioned herein.

Table of Contents

What's New in MAPS 6.6.2?	4
MAPS Updates	4
Product versions	4
Installation	4
1. Prepare test environment and ensure current backup	4
2. Check for updates	4
3. Allow update process to complete	5
4. Verify the latest version is installed	5
Allowing Access to MAPS Data Connections from Evisions CADMUS	6
Assigning the Run Direct Query Operation	6
MAPS 6.6.2 Release Notes	8
Getting Help	9

What's New in MAPS 6.6.2?

Evisions is pleased to announce the release of MAPS version 6.6.2, which includes the following changes:

- Added the Run Direct Query operation for users who intend to execute queries from non-MAPS applications.
- Updated support for Chrome cookies.
- Deadlock errors were occurring when actions audited by MAPS were being performed during Data Warehouse migrations.
- Various eLauncher accessibility improvements.

We appreciate the feedback received from all of our users. Our products would not be what they are today without your continued support. If you have any comments or suggestions, please do not hesitate to [open a case with the HelpDesk](#) and let us know.

MAPS Updates

MAPS 6.6.2 is an update to the MAPS service (which includes the eLauncher) and the MAPS Config. You should upgrade both components concurrently.

[Product versions](#)

The latest versions of MAPS included in this release are:

- MAPS service 6.6.2.2407 / MAPS Config 6.6.2.1336 / eLauncher 6.6.2.2

Installation

[1. Prepare test environment and ensure current backup](#)

We highly recommend installing updates in a test environment before applying them to your production environment. You should make sure that a current backup is available in case of any unforeseen issues. To create a full backup of your MAPS environment, go to the **Server** -> **Backups** screen in MAPS and click **Backup Now**.

[2. Check for updates](#)

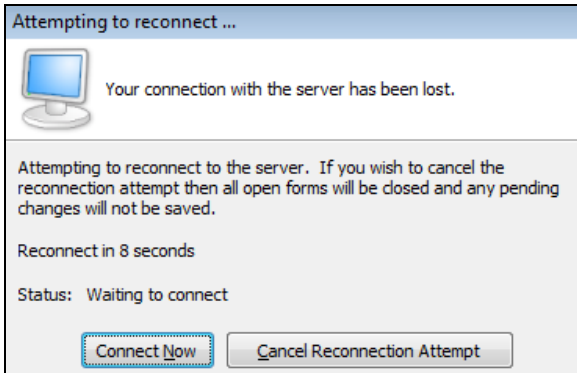
Click the **Check for Updates** button in the MAPS Configuration tool to view available updates.

If you need to apply earlier updates prior to the 6.6.2 update, please refer to the appropriate [release guide\(s\)](#) before proceeding.

It is possible to apply updates when users are on the system; however, to avoid the possibility of losing unsaved work we recommend applying updates during off hours.

3. Allow update process to complete

When applying updates to the MAPS service you will be temporarily disconnected from the server:



The update process may take a few minutes to complete. **Do NOT cancel the reconnection attempt or manually restart the server.** You will automatically be reconnected to the server once the update has been applied.

4. Verify the latest version is installed

To ensure that you are on the most current version, continue clicking the **Check for Updates** button and applying the updates until no new updates are available.

Please Provide Us with Your Feedback!

As always, we welcome any [feedback or suggestions](#) you may have. We very much appreciate your thoughts and suggestions, so please keep the great ideas coming!

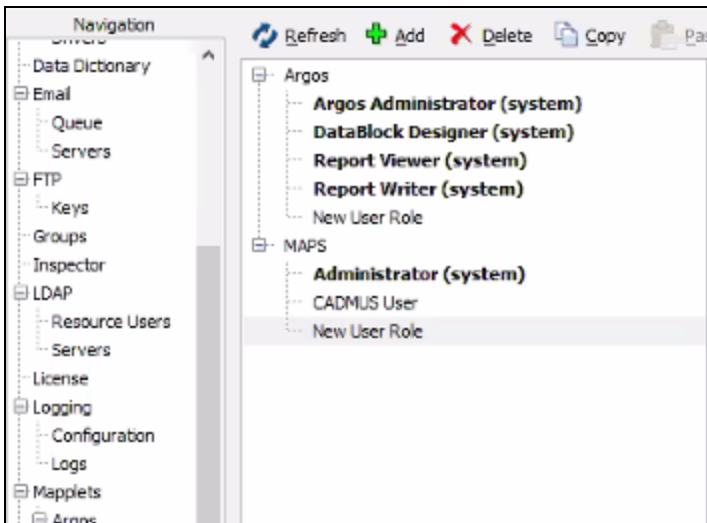
Allowing Access to MAPS Data Connections from Evisions CADMUS

To allow Evisions CADMUS users to run a query with a MAPS data connection, the MAPS Administrator will need to create a new MAPS role that has the Run Direct Query operation using MAPS Configuration. This new MAPS role will then need to be assigned to users who will be running queries from Evisions CADMUS. There are a few things to note:

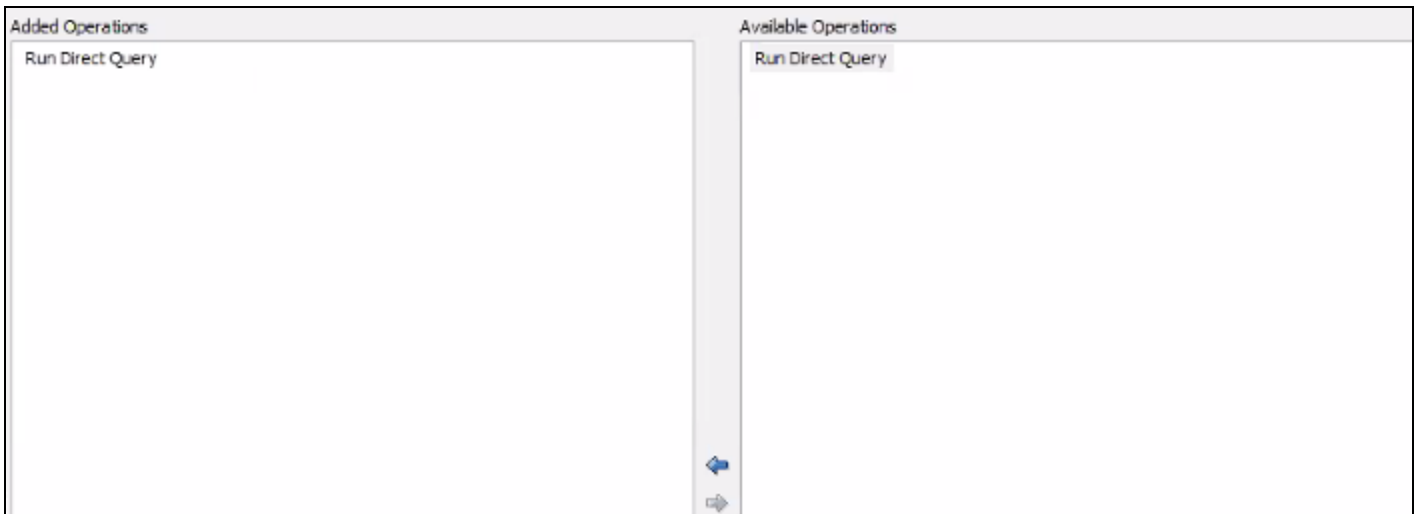
- This role should only be assigned to MAPS users who intend to execute queries from Evisions CADMUS.
- Evisions CADMUS users must have access to the Argos application at either a group or individual level.
- All MAPS data connection types are supported.

Assigning the Run Direct Query Operation

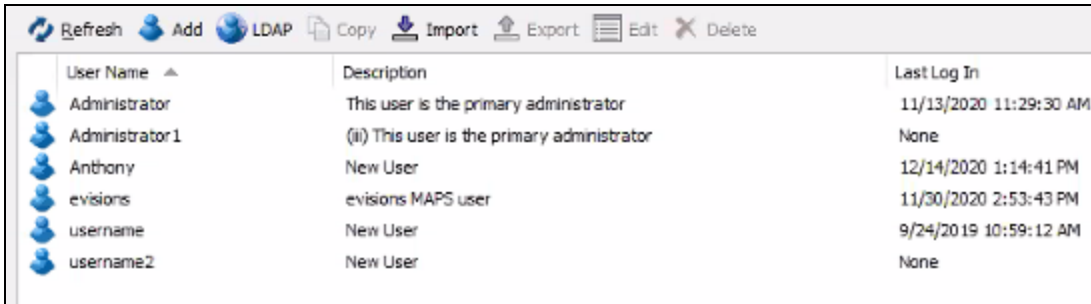
To create a new MAPS role, navigate to the User Roles tab, highlight MAPS, and select the **Add** button. It is recommended to give your newly created role a new name.



Select **Run Direct Query** from the Available Operations list, and then select the blue arrow icon to move the operation over to the Added Operations list.

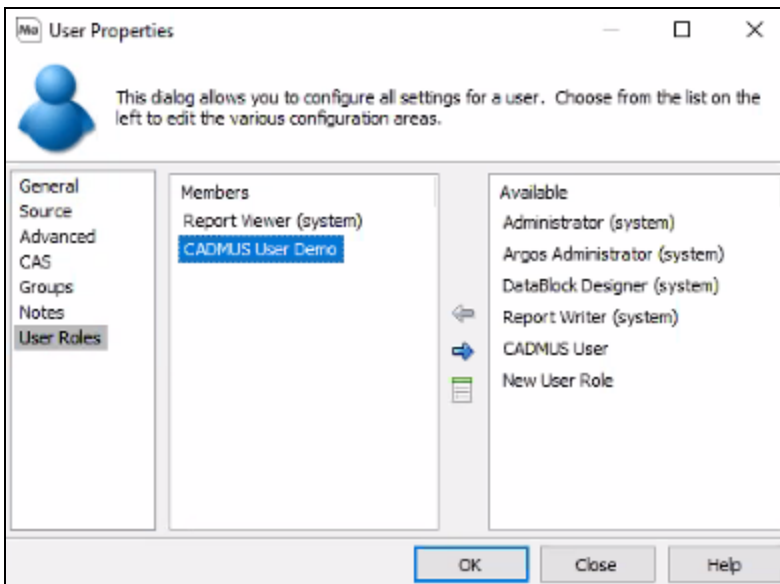


Navigate to the Users tab, select a user, and then select the **Edit** button to open the User Properties window.



User Name	Description	Last Log In
Administrator	This user is the primary administrator	11/13/2020 11:29:30 AM
Administrator1	(ii) This user is the primary administrator	None
Anthony	New User	12/14/2020 1:14:41 PM
evisions	evisions MAPS user	11/30/2020 2:53:43 PM
username	New User	9/24/2019 10:59:12 AM
username2	New User	None

Assign your newly created role to the user by selecting the role from the list of available roles on the right, and then select the blue arrow icon to move it to the Members list on the left.



MAPS 6.6.2 Release Notes

MAPS Service 6.6.2.2407 / MAPS Config 6.6.2.1336 / eLauncher 6.6.2.2

MAPS

Enhancements

Area	Description	Issue number
Accessibility	Increased the contrast of the text for session expiry warnings in the eLauncher.	MAPS-1421
Accessibility	The lock and database lock icons on the Change Password dialog box in the eLauncher were missing alt text.	MAPS-1414
Accessibility	The leaves icons in the eLauncher now have transparent backgrounds for improved visibility when viewing in high contrast mode.	MAPS-1312
Accessibility	Settings and Sign Out buttons in the eLauncher can now be focused and reached by tabbing.	MAPS-2471
eLauncher	Updated support for Chrome cookies.	MAPS-2743
Help	Added auditing actions and descriptions to the Web Help.	MAPS-2459
Integration	Added the Run Direct Query operation for users who intend to execute queries from non-MAPS applications.	MAPS-2815

Resolved Issues

Area	Description	Issue Number
Help	Opening the Web Help via the F1 key in the Driver's section of the MAPS Configuration Tool was taking users to an incorrect URL.	MAPS-2776
Log Files	Deadlock errors were occurring when actions audited by MAPS were being performed during Data Warehouse migrations.	MAPS-2531

Getting Help

For information on using the software, please refer to the in-product Help, which contains detailed information on all aspects of the product.

If you are having problems with the installation or configuration, you can search our [support site](#), which includes a knowledge base of common issues. If you are unable to find the solution, submit a HelpDesk request with a detailed explanation of the problem you are experiencing.

Please do not hesitate to contact the Evisions HelpDesk if any questions or problems arise. We are here to help you and want to ensure your success.

If you find that areas of this documentation could benefit from additional detail or clarification, please let us know. We are constantly trying to improve the installation process to make it as easy as possible.